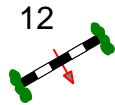
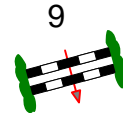
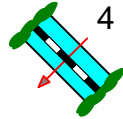
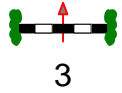
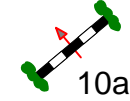
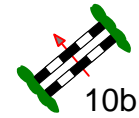
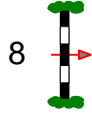
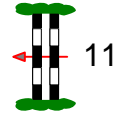
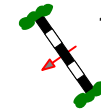
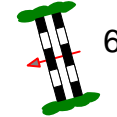
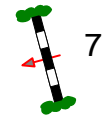


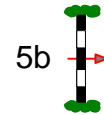
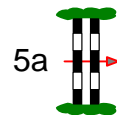
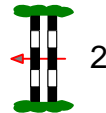
roba



Ziel



Start



Eintritt / Austritt

Sonnefeld - Frankenhof 2017

Prüfung Nr.: 3

Springprüfung

Klasse: S*

Freitag, 19. Mai 2017

Beginn: 17:00 Uhr

Richtverf.: A
LPO § 501,A1
RG / Art.
Höhe: 1,40 mtr.

Tempo: 350 m/Min.

Bahnlänge: 450 mtr.
Erlaubte Zeit: 78 sek.
Höchstzeit: 156 sek.

Hindernisse: 12
Sprünge: 14
Hindernisfehler: sek.
geschl. Hindernis:

1. Stechen über:

Bahnlänge: 0 mtr.
Erlaubte Zeit: 0 sek.
Höchstzeit: 0 sek.

Richter