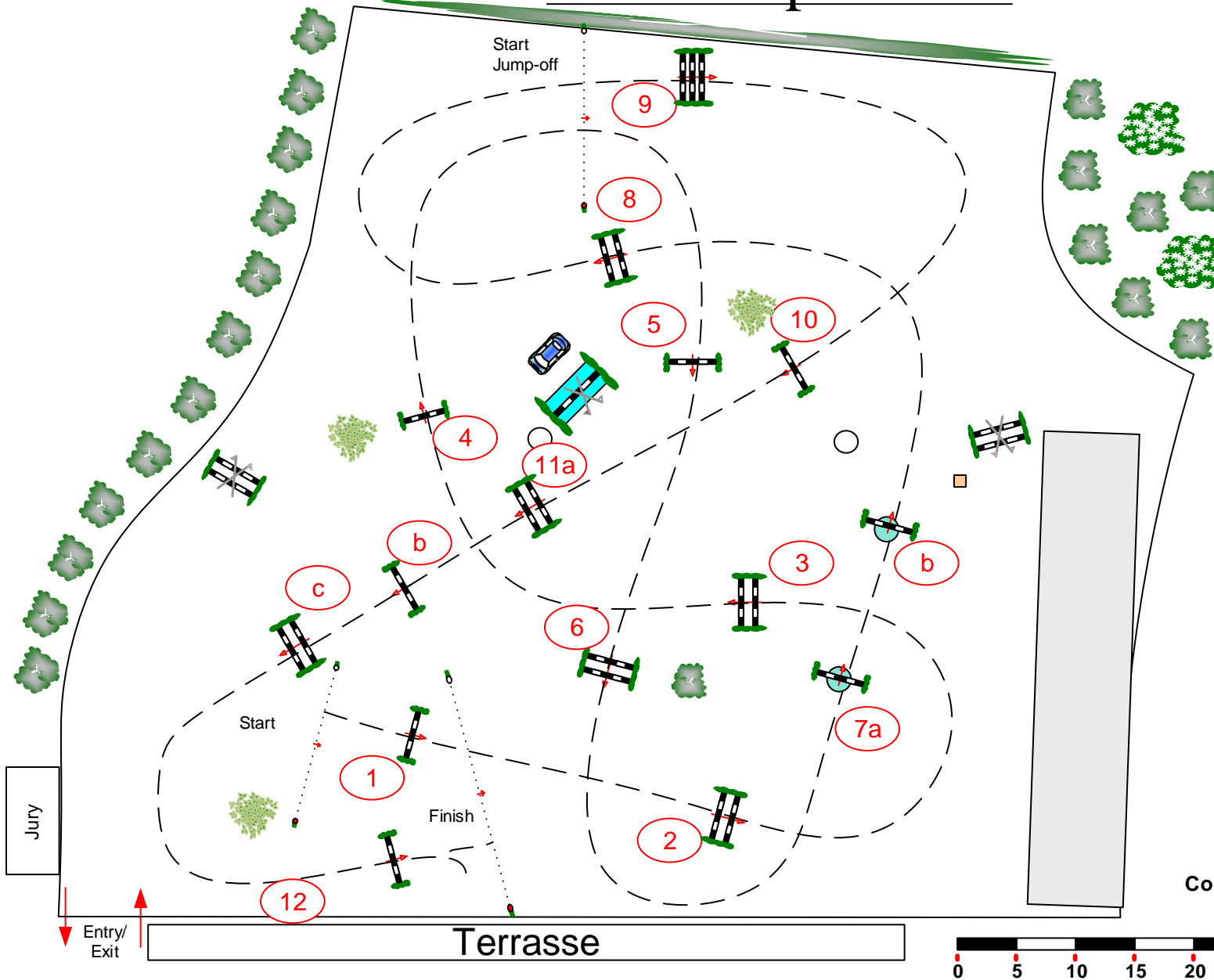




# CSI-CH/J/U25-A/CSI1\*/CSIYH1\*

## Eschweiler Young Masters

### 23.-26. April 2015



Class No.: **6**

CSI1\* Diamond-Tour Grand Prix

Competition with one jump-off

Sonntag, 26. April 2015

Start: 10:00

Table: A  
 National RG:  
 FEI RG / Art. 238.2.2  
 Height: 1,40 m

Speed: 400 m/min

Length: 510 m

Time allowed: 77 sec

Time limit: 154 sec

1st Jump-off:

9, 10, 2, 3, 4, 11a, 11b, 12

Length: 320 m

Time allowed: 48 sec

Time limit: 96 sec

Obstacles: 12    Jump-off: 7

Efforts: 15    Jump-off: 8

Course Designer: Matthias Rosellen/GER & Team