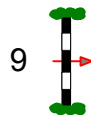
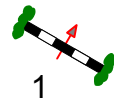
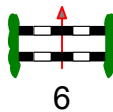
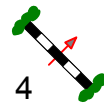
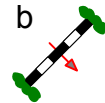
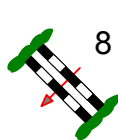
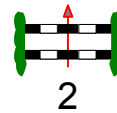
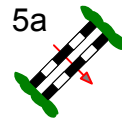
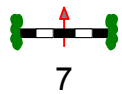


Borgstedtfelde 2013

Eintritt / Austritt



Ziel

Start

Prüfung Nr.: 16

Pony

Fehler/Zeit-Springen

Klasse: A**

Samstag, 27. April 2013

Beginn: 10:15 Uhr

Richtverf.: A
LPO § 501 / 1a1
RG / Art.
Höhe: 1,05 mtr.

Tempo: 350 m/Min.

Bahnlänge: 420 mtr.
Erlaubte Zeit: 72 sek.
Höchstzeit: 144 sek.

Hindernisse: 9
Sprünge: 10
Hindernisfehler: sek.
geschl. Hindernis:

1. Stechen über:

Bahnlänge: 0 mtr.
Erlaubte Zeit: 0 sek.
Höchstzeit: 0 sek.

2. Stechen über:

Bahnlänge: 0 mtr.
Erlaubte Zeit: 0 sek.
Höchstzeit: 0 sek.

*Parcourschef
Hein Wilhelm Meyer
Jörg Griese*